

Adjustable Rack and Fixture optional


SMART RECEIVE™

Intake. Clear. Prep for What's Next.


SMART Receive™ is the intelligent front-end for mobile device processing centers. It accelerates intake, clears data to industry standards, and prepares each device for its next step – whether moving into automation or manual testing. By consolidating detection, erasure, charging configuration, and reporting into one streamlined process, SMART Receive™ eliminates bottlenecks and ensures every device is ready for downstream operations.

From carton to system, SMART Receive™ eliminates bottlenecks, reduces operator touchpoints, and ensures devices are always ready for what comes next.


40+
UPH



99%
ACCURACY



1DAY
ONBOARDING



Key Highlights

Device Intake & ID: Reads IMEI, model, and key identifiers.

Secure Data Clear: Performs erasure and resets to industry standards.

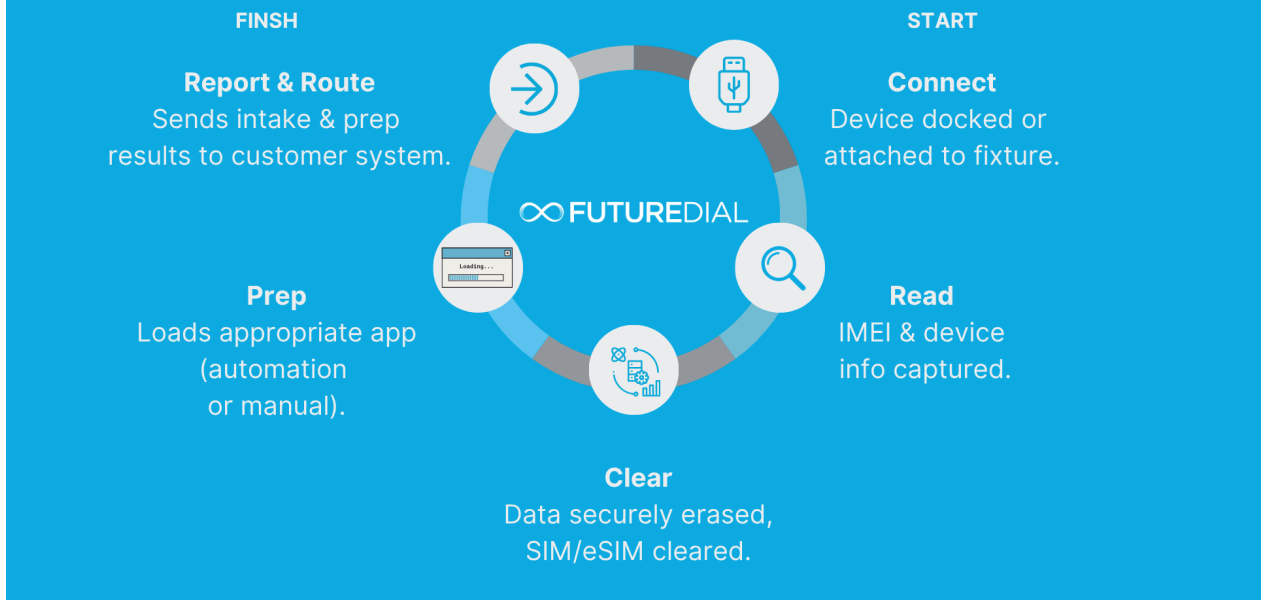
Next-Step Prep: Automatically loads the correct testing app (automation or manual function test).

Routing & Reporting: Pushes results to ERP/WMS or Workflow Manager™.

Error-Free Guidance: Operator UI minimizes errors with prompts and tracking.

Patented Efficiency Algorithms: Targeted efficiency, less motion.

How SMART Receive™ Works



Key Features

- Device detection and ID capture
- Secure data clearing / factory reset / overwrite
- Firmware flashing & app loading
- Automated next-step prep (automation or manual functional test app)
- Highly configurable and customizable
- Battery health check & charging
- Lock / jailbreak detection (FMI, KNOX, DEP, Root, Jailbreak)
- SIM / eSIM detection & clearing
- Guided operator UI with productivity tracking
- Equipment monitoring & fail-rate alerts

Technical Specifications

Supported Devices	Smartphones, tablets
Connectors	USB-C, Lightning, Micro-USB
Integrations	ERP/WMS, Powered by Decision Manager™
Station Footprint	~3-4 ft × 3 ft per station
Power	110-240 VAC
OS Support	Android & iOS

Why Choose SMART Receive™?

SMART Receive™ is the front-end prep engine that accelerates operations, lowers costs, and ensures seamless downstream processing. By clearing, configuring, and prepping devices at intake, it enables processing centers to achieve faster throughput, reduce operator error, and guarantee every device is ready for what comes next.



sales@futuredial.com

FutureDial Inc. | futuredial.com