

MobileQ™

Simultaneous Pre-Loading and Configuration for Queued Batches of Android and iOS Mobile Devices

Automated and streamlined mobile device customized configurations

A powerful device configurator:

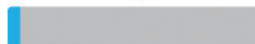
FutureDial's MobileQ™ efficiently pre-loads and customizes Android and iOS smart phones and tablets, for both carrier-activated and nonactive mobile devices. MobileQ is a powerful device configuration solution that can run on any compatible PC to handle mobile device settings, contacts, applications, documents, media files, Google accounts, Exchange Server, VPN, Wi-Fi settings and more across a fleet of enterprise handsets.



Manual Processing



10 devices per Man-Hour



MobileQ



200 devices per Man-Hour



Easy to Operate, to Get More Devices Processed:

The fully automated solution features easy “plug-and-play” operation and works simultaneously on batches of connected devices, greatly increasing line operation throughput. With MobileQ, operators can pre-load and customize far more devices per man hour than by using manual methods.

Ideal for:

- Mobile Device Kitting Operations
- Wireless Carriers/Carrier Service Integrators
- Enterprises Managing Large Numbers of Mobile Devices

FEATURES & BENEFITS

Hardware Independent:

MobileQ runs on any compatible PC with USB ports. No special client PC is required.

Easy to Operate:

Plug-and-play simplicity and guided screens; very little operator training required.

Simultaneous Processing:

Batches of mobile devices are processed simultaneously for time and cost savings.

“Hot-Swapping” Saves Time:

After a device is finished being processed, a new device can be connected in its place, even while others are still being processed by the system.

Android Device Emulator:

MobileQ is compatible with all Android devices via emulation through their touch screens. Ready to use out-of-the-box, so any additional development effort by integrators is not needed.

Accuracy Using Master Device Profiles:

Master profiles for devices can be created to customize settings and preload content to batches of devices at a time, as defined by the profile.

Device Content Transfer:

Quickly and easily handle content transfer to devices (contacts, media files, apps, documents, etc.).

Settings for Multiple Devices:

Easily install Wi-Fi and other settings, Google accounts and services to multiple mobile devices simultaneously.

Smart Phone and Tablet Support:

MobileQ Configurator supports Android and iOS smart phones and tablets delivering a one-stop platform for all your device configuration needs.

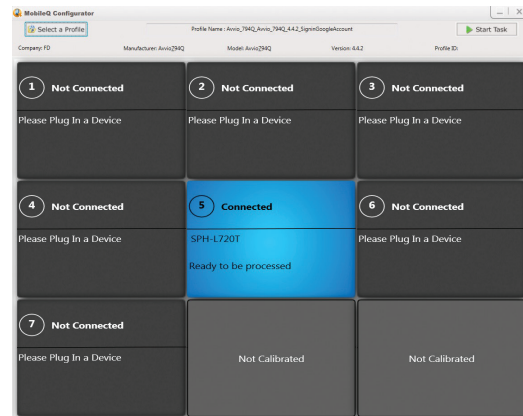
MobileQ

Simultaneous Content Pre-Loading and Customization for Queued Batches of iOS and Android Mobile Devices

Main Components

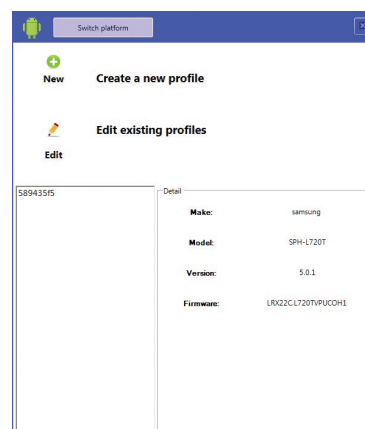
MobileQ Configurator

The MobileQ Configurator program runs on any compatible PC and provides a user-friendly interface for processing up to 20 mobile devices simultaneously with pre-defined device profile settings and data. The MobileQ Configurator's graphical user interface is easy to use, and provides the status of each device's operation in progress.



MobileQ Profile Manager Create Master Profiles

The Profile Manager enables users to create master profiles for mobile devices, and to use the master profiles with the MobileQ Configurator program to process batches of mobile devices simultaneously. The Configurator can view the master profiles, and perform processing tasks based on the content data and settings pre-defined in the master profiles.



MobileQ Emulator: Record and Save Android Device Setting Keystrokes to Program Multiple Android Devices

The time-saving MobileQ Emulator records and saves the actual keystrokes that are used in creating settings on a device. Just record one set of emulated keystrokes for settings on a connected device, and store the captured keystrokes as a recording in a master profile to automatically program multiple devices at a time, saving you time and hassle!



The Emulated Screen from the Connected Device is shown, with control buttons.

MobileQ

Simultaneous Content Pre-Loading and Customization for Queued Batches of iOS and Android Mobile Devices

Fast, Easy and Customizable

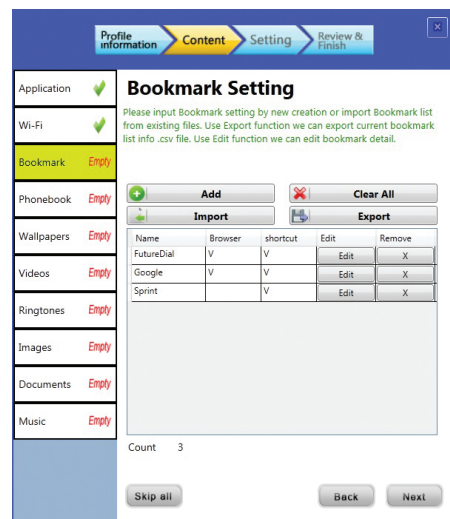
Handles Important Content and Settings for Android and iOS Devices:

- Applications
- Website Bookmarks
- Phonebook Contacts
- Wallpapers
- Video Files
- Wi-Fi
- Mail Accounts
- Ringtones
- Image Files and Photos
- Documents
- Music Files
- APN
- VPN

Content and Settings for Android Devices:

MobileQ enables you to easily pre-load content and settings for Android devices, such as:

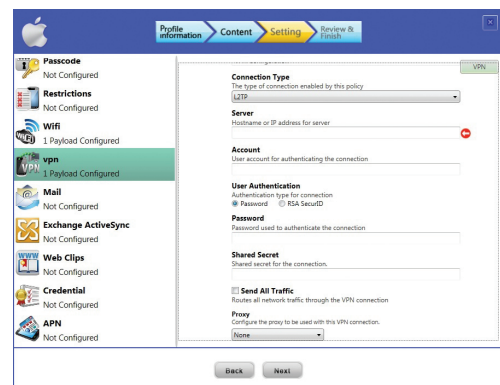
- Applications
- Website Bookmarks
- Phonebook Contacts
- Wallpapers
- Video Files
- Wi-Fi settings
- Mail Accounts
- Ringtones
- Image Files & Photos
- Documents
- Music Files
- APN
- VPN



Content and Settings for iOS Devices:

The Profile Manager also features a user-friendly configuration tool to create profiles for iPhone devices. Profile Manager can set a variety of iPhone attributes, settings, and content, including:

- Contacts
- Applications
- General Settings
- Credentials/Certificates
- Pass code
- VPN
- APN
- Wi-Fi
- Mail
- Exchange ActiveSync
- Web Clips



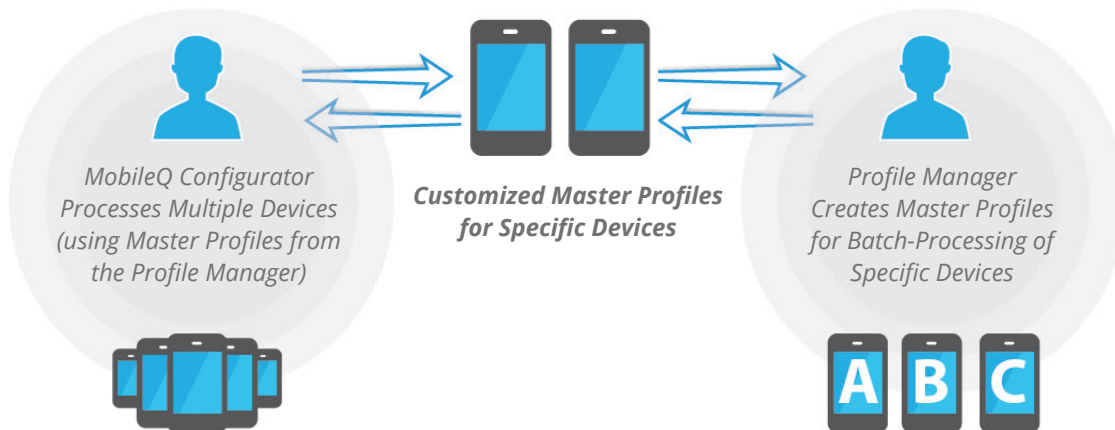
MobileQ

Simultaneous Content Pre-Loading and Customization for Queued Batches of iOS and Android Mobile Devices

World Class Support

Supports 80+ Category Settings for Android Devices:

- Google Accounts
- Wireless & networks
- Exchange Server
- VPN Setting
- APN
- Call Settings
- General Application Settings
- Manage Applications
- Specific Application Setting
- Location & Security Settings
- Accounts & Sync Settings
- Privacy options
- Bluetooth
- Wi-Fi
- Date & Time
- Voice Input and Output
- Sound Settings
- Display Settings
- Accessibility
- Any Settings that can one can navigate to and click on a device



Client PC System Requirements:

- Operating System: Windows 7 & Windows 10 Professional 32 bit and 64 bit.
- Min. Required Hard Disc Space: 500 MB
- Min Required RAM: 2GB
- Recommended CPU/Processor: Intel Core i5-3317U, CPU 1,70GHz
- USB: FutureDial-branded USB Hubs recommended (Additional 7-port USB hubs available from FutureDial for expanded, multi-device processing use)
- Matching Data Cables for Handsets (additional cables available from FutureDial)