

## Data Storage Eraser™ (DSE)

Simultaneous Data Storage Erasure for Multiple Drives

### Scalable, High-Volume HDD/SSD Erase System for Intranet-Connected and Local Boot Computing Environments

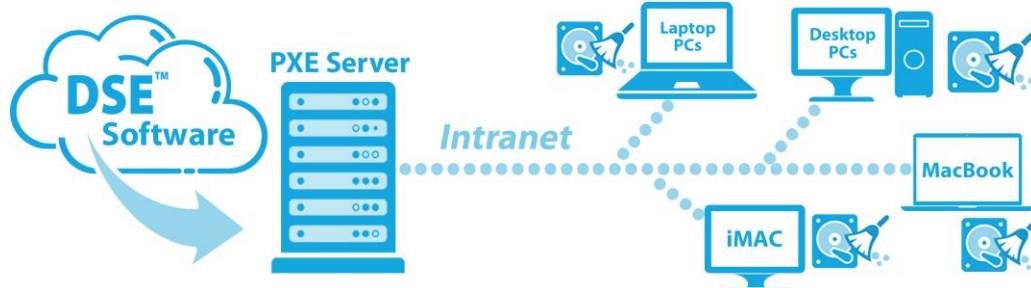
Ideal for:

- Network-based HDD/SSD Processing Environments.
- Intranet-connected PCs and MACs with Internal HDDs/SSDs or USB externally-connected drives.

#### Simultaneously Erase Multiple Drives Across Intranet-Connected Computers — Easily and Securely

FutureDial's Data Storage Eraser™ (DSE) is the newest member of the Lean One Touch family of products. It is ideal for securely and simultaneously erasing multiple hard drives or solid-state drives across network-based environments when it is time-consuming or impractical to remove drives from intranet-connected computers. Data Storage Eraser™ (DSE) is designed specifically for working quickly and simultaneously across high-volume processing environments. The solution runs on each intranet-connected computer screen, and is easy to operate, so little operator training is needed. Best of all, it is scalable to grow with your operational requirements.

#### Scalable to Meet the Needs of Your Business



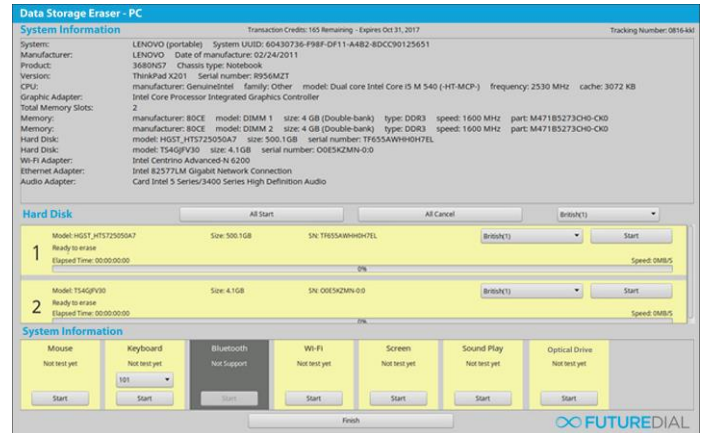
#### FEATURES & BENEFITS

- **Automated to Save Time:**  
Faster and more accurate than manual data verification and data clearing methods.
- **Fully Scalable Solution:**  
Able to scale for processing from a dozen to thousands, the solution can grow with the needs of your business.
- **Fast, Thorough Verification:**  
Accurate process checking can be performed across multiple drives with the color-coded status indicators on the UI.
- **Industry-Grade Data Clearing:**  
Erasure is performed for All international erasure standards, which can be selected for use in processing.
- **UI Displays the Status of Each HDD Erasure Process:**  
The UI runs on the screen of each intranet-connected computer, and provides details for the drive being processed (disk model and size, Serial Number, Wiping standard being used, estimated processing time, and more).
- **Drive Type Agnostic:**  
The system can automatically process Hard Disk Drives in any combination, as well as SSD and external USB Drives.

## Color-Coded UI for Easy “At-A-Glance” Monitoring

The solution’s software program UI that runs on each intranet-connected computer provides easy-to-monitor color-coded status panels and indicators for convenient “at-a-glance” reference by operating staff. The UI panels display specific information for the hard drives and the computer’s system, such as:

- Serial Number
- Model
- Disk Size
- Elapsed & Estimated Time
- Average Erasing Speed.
- Status/Progress Bar
- Wiping Standard being used



## All International Erasure Standards for Secure, Thorough Data Clearing

Erasure is performed to satisfy all international erasure standards, including the following, which can be selected for use in processing. These are better than standard formatting data clear methods, and the erased data is unrecoverable.

- |                |                  |                    |                         |
|----------------|------------------|--------------------|-------------------------|
| • DoD          | • Canada RCMP    | • New Zealand      | • One Time Erase_Random |
| • DoD7         | • Canada_CSEC    | • Russia           | • N Time Erase_Random   |
| • DoE          | • UK             | • Bruce Schneier’s | • Low Level Format      |
| • NSA          | • British        | • Peter Gutmann’s  | • Secure Erase          |
| • US Air Force | • German         | • Roy Pfitzner’s   | • Customization         |
| • US Army      | • Australia      | • One Time Erase_0 | • And MORE...           |
| • US Navy      | • Australia_15GB | • One Time Erase_1 |                         |



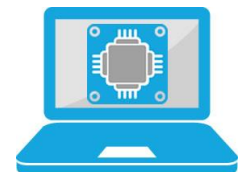
## Scalable Solution to Grow with Your Business Needs

Data Storage Eraser™ (DSE) is designed to be scalable to meet any processing environment. Whether you have 10, 50, 100 or *several thousands* of computers to process across an intranet, the Data Storage Eraser™ can automatically scale to handle the volume and process them simultaneously.



## Reading of Computer Hardware Information

The system can read and display details of the computer’s hardware and system, such as: Manufacturer, Model, CPU, Graphic Adapter, Total Memory Slots, Hard Disk Model and Storage Capacity, Wi-Fi Adapter, Ethernet Adapter, Audio Adapter, and more.



## Optional Hardware Diagnostics

In addition to drive erasure, Data Storage Eraser™ (DSE) can also run operator-assisted hardware diagnostic tests for functionality of the Mouse, Keyboard, Bluetooth, Wi-Fi, LCD, Audio and Optical Drive of each PC connected on the intranet to the Data Storage Eraser™ system.



### Local Boot Option via USB Dongle or CD

The Solution also offers a local boot option for processing drives on intranet-connected computers. With the local boot option there is no server required, as the solution is delivered via a USB Dongle or CD to individual computers.

### Fast, Secure Erasure Across Multiple Drives

Data Storage Eraser™ (DSE) is designed for simultaneous, high-volume erasure processing across multiple drives. Processing is fast and automated, with plug-and-play simplicity for operators.

### Secure Dongle for Off-Line Credit Management

Customers are provided with a secure dongle to connect to their Data Storage Eraser™ (DSE) system to process drives without network connections. Additional credit can be purchased over the cloud.



### Data Storage Eraser™ (DSE) Specifications

- Desktop and laptop computer (PC and/or MAC).
- Boot from USB/CDROM/NET.
- Multiple disks on system.
- 1 pass, 1TB / 1.6 hour on Average.
- All International erasure standards.
- Standard Customization is available.
- Complete transaction report.
- Secure dongle for off-line credit management.
- Additional credit can be purchased over the cloud service.
- PC Function tests: Mouse, Keyboard, Bluetooth, Wi-Fi, LCD, Audio, Optical Drive.
- Reads and displays details of the computer's hardware and system.
- Erases all known operating systems, such as Windows, Linux, Unix and MAC OS.
- HDD/SSD supported.

Data Storage Eraser™ (DSE)		
NET BOOT	LOCAL BOOT	
	Online	Offline
PXE Server Software and Switch	<ul style="list-style-type: none"> <li>• Bootable USB Thumb Drive</li> <li>• Bootable CD-ROM</li> </ul>	<ul style="list-style-type: none"> <li>• Bootable USB Thumb Drive</li> <li>• Bootable CD-ROM</li> </ul>
		<ul style="list-style-type: none"> <li>• Credit USB</li> </ul>

### About FutureDial, Inc.

Founded in 1999, FutureDial is a leading provider of carrier-grade solutions and tools for mobile device recyclers, reverse logistics companies handling mobile devices, wireless network operators, mobile device manufacturers (OEMs), national and independent wireless retailers and dealers, and enterprises worldwide. FutureDial solutions help clients with mobile device content management, device data sanitization, device hardware diagnostics, reverse logistics warehouse and fulfillment center line operations, and custom developed software and applications for OEM rebranded distribution and product bundling.

FutureDial, Incorporated — 392 Potrero Avenue, Sunnyvale, CA 94085 U.S.A. TEL: (408) 245-8880 FAX: (408) 245-8885  
 Website: [www.futuredial.com](http://www.futuredial.com) Contact Sales: [sales@futuredial.com](mailto:sales@futuredial.com)

© 2017 FutureDial, Inc. All rights reserved. All FutureDial names and marks associated with FutureDial products are trademarks or service marks of FutureDial, Inc. and are registered or common law marks in the United States and other countries. All other trademarks are the property of their respective owners. No portion hereof may be reproduced or transmitted in any form or by any means, for any purpose other than the recipient's personal use, without the express written permission of FutureDial.

12.04.2017